

“The Institute for Regional Conservation Conservation and Gardening in a Changing World”

District X Fall Meeting, Florida Federation of Garden Clubs
October 8, 2020



International Policy Lead

George D. Gann
www.regionalconservation.org
www.ser.org

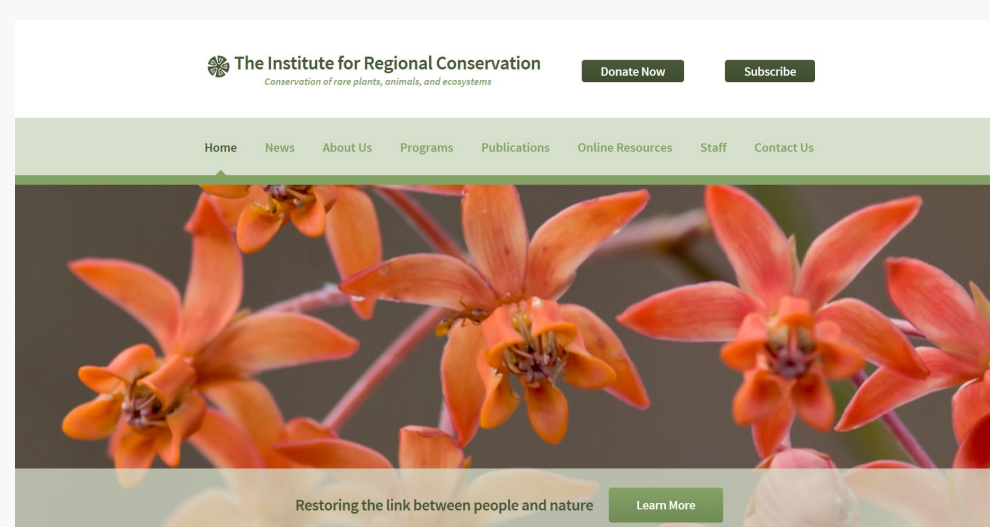


Chief Conservation Strategist

Acknowledgements

- **Maria Wolfe and Carol Coleman** for the invitation and coordination.
- **Kimberlee Duke Pompeo, Jerry Lower, Barbara Hadsell, Reina Snyder, and Patricia Binder** for collaboration on publication projects.
- **All the IRC folks**, past and present, and all our **funders** and **conservation partners**.
- **Photographers**, including Roger Hammer, Keith Bradley, Shirley Denton, James Johnson and many others.

Our Program



IRC aims to protect, restore and manage all biodiversity on a regional basis, and to **prevent local extinctions of native plants, animals and ecosystems**. All conservation is ultimately local. **2019 was our 35th Anniversary Year**. Staff of 8, 13 Associates and 7 Board Members.

Floristic and faunistic inventories

Rare species research

Ecological restoration design and implementation

Educational training and workshops

Online tools and resources

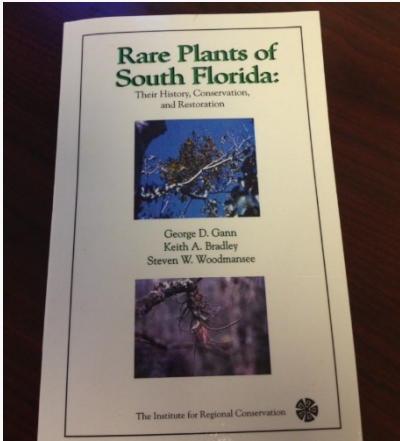
International policy

Some IRC Resources



 **Natives For Your Neighborhood**
Conservation of rare plants, animals, and ecosystems

[Donate Now](#) [Subscribe](#)

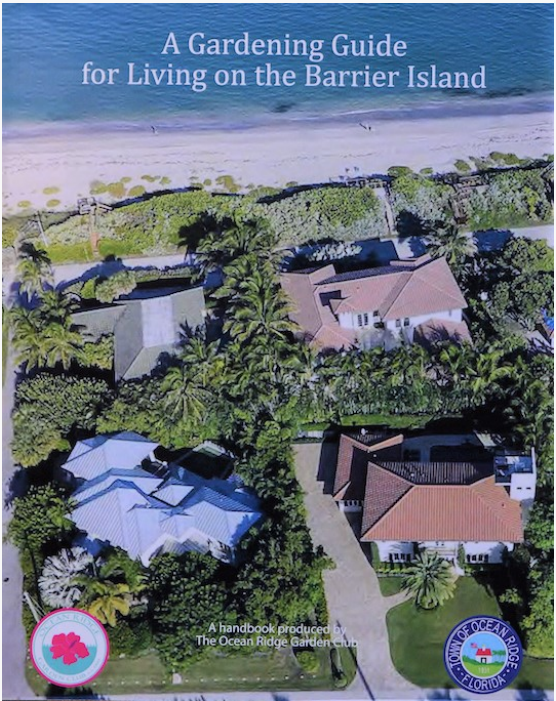


The Floristic Inventory of South Florida
Conservation of rare plants, animals, and ecosystems



Plantas de la Isla de Puerto Rico
Plants of the Island of Puerto Rico
Un servicio para la conservación de flora / A conservation service for the flora

The Institute for Regional Conservation



Amigos de Plantas de Puerto Rico / Friends of Plants of Puerto Rico

George Gann
Edit Profile

FAVORITES
News Feed
Messages
Events
Sale Groups

PAGES
The Institute for Re...
Pages Feed
Like Pages
Create Ad
Create Page

GROUPS
Amigos de Planta...
Florida Flora and...
PLANTY - Plantas...
Urban Paradise G...

RECENT ACTIVITY
Jossy Gonzalez
April 15 at 10:28pm
Buena noches! acabo de comprar esta planta alguien sabe cual es y como la puedo cuidar. Mil gracias anticipadas 😊



The Institute for Regional Conservation

Get Your Hands in the Sand ~ Native is NOT a Dirty Word!

by Kimberlee Duke Pompeo, FFGC District X, PAT Committee,
Vice Chairman of Barrier Islands with George D. Gann, IRC Founder



Were you told as a youth not to play in the dirt? Good chance most of us were. Yet, I don't think our parents meant for us to stop caring about mother earth. Here's how the environment sees us. It's as simple as a multiple-choice question. When asked, do you crusade for the environment? ...which do you check?

Never Rarely Sometimes Always

If you checked the last box "Always" – read no more, go straight to the end where you'll find your like-minded [donate] button for a modest contribution towards nature's shouldered burden.

If you checked either of the first three than I'm afraid you have a little required reading to do. Don't worry, though. You're not alone. We're writing as a result.

People often view nature conservation and traditional views of gardening as having to choose one way or the other. It's simply not true. It's not a contrast like *hardscapes* – the stepping stones in your garden from the *softscapes* – the feathery, green ferns that delicately sway in the wind. Gardeners know that it resides in "the variety" of methods that make a visually appealing garden. Just as there are varieties of soil and dirt to grow particular flowers and foods, natives offer intrinsic beauty in a variation of colors and textures, forms and functions with the powerful contribution towards mitigating climate change.



Zip Code 33444 search for Native Plants, Habitats and Wildlife

This is a long narrow zip code area east of I 95 and west of US 1 running from Dune Road south to the C-15 canal in Delray Beach in Palm Beach County. Link to [map](#).

Native Plants

• Click below to obtain a list of native plants that are recommended for 33444, and to see photos and learn more about them.

Whether you are just beginning a new native plant project, or will be introducing native plants into an existing garden, this is the place to find out which native plants are right for your specific area.

[Get your plant list for 33444 !](#)

[Find Native Plants!](#)

[Acknowledgements and past sponsors](#)

[Become a sponsor!](#)

Emergent Sponsors:



Ecological Restoration and Community Outreach





INTERNATIONAL PRINCIPLES AND STANDARDS FOR THE PRACTICE OF ECOLOGICAL RESTORATION

SECOND EDITION SUMMARY



International Policy Work on Ecological Restoration, Conservation, and Sustainability

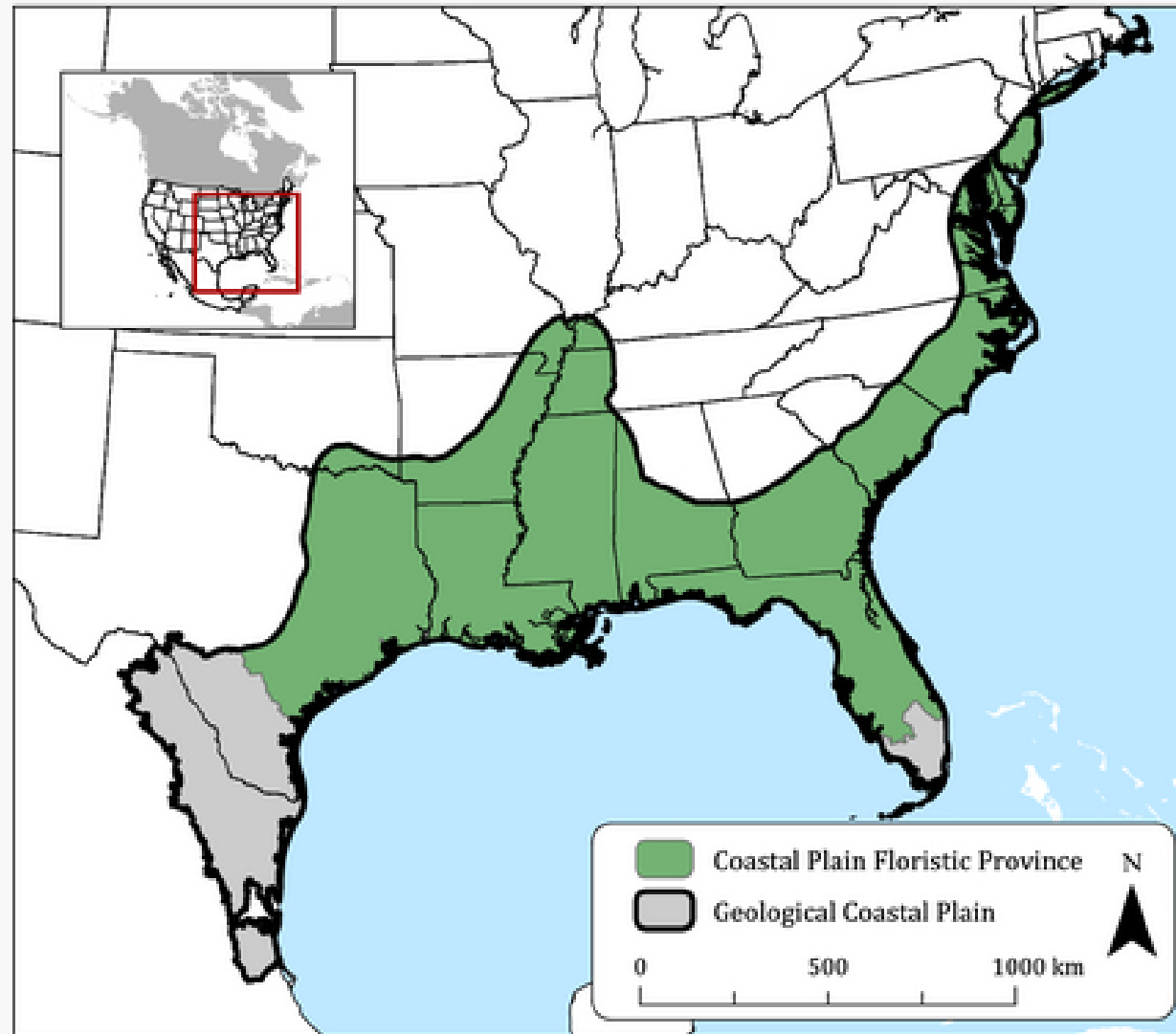
RESTORING LAND, WATER & COMMUNITY RESILIENCE
SER) 2019 | CAPE TOWN SOUTH AFRICA

8th World Conference on Ecological Restoration
Cape Town, South Africa
September 24-28, 2019

SER HOME f t i in Registration

Home About Program Register Sponsors & Exhibitors Hotels & Travel Promote Search SER 2019

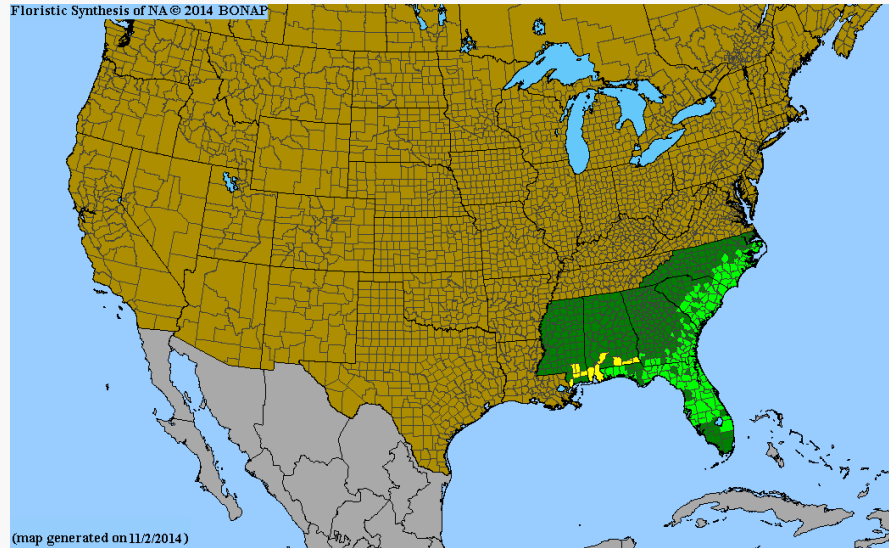
South Florida Conservation Context



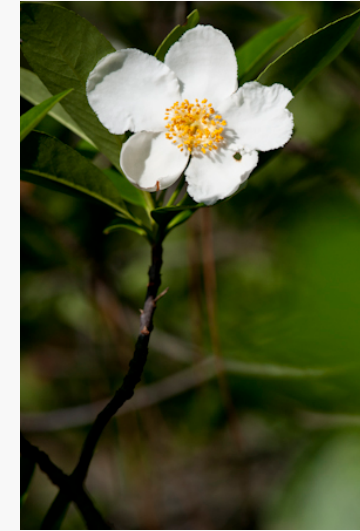
North American Coastal Plain Global Biodiversity Hotspot

Noss et al. 2014

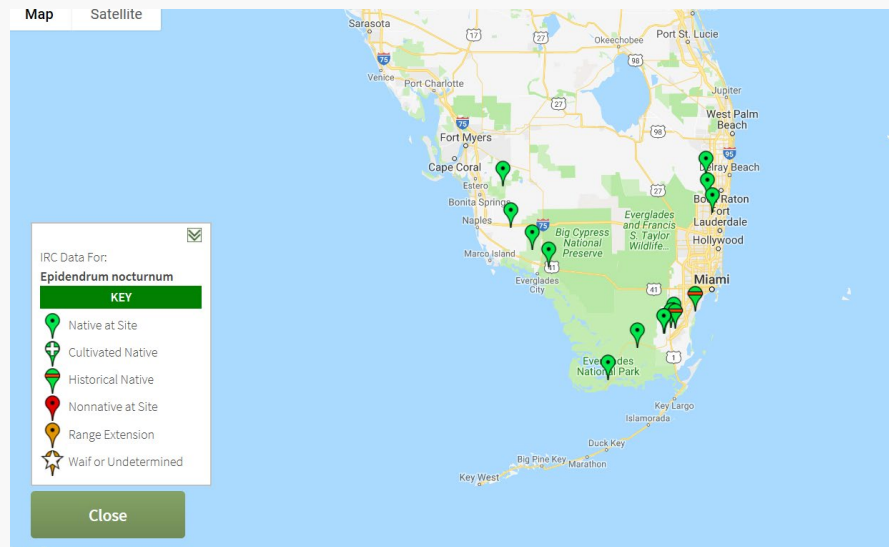
South & North Range Limits in South Florida



Gordonia lasianthus (BONAP.org)



K. Bradley

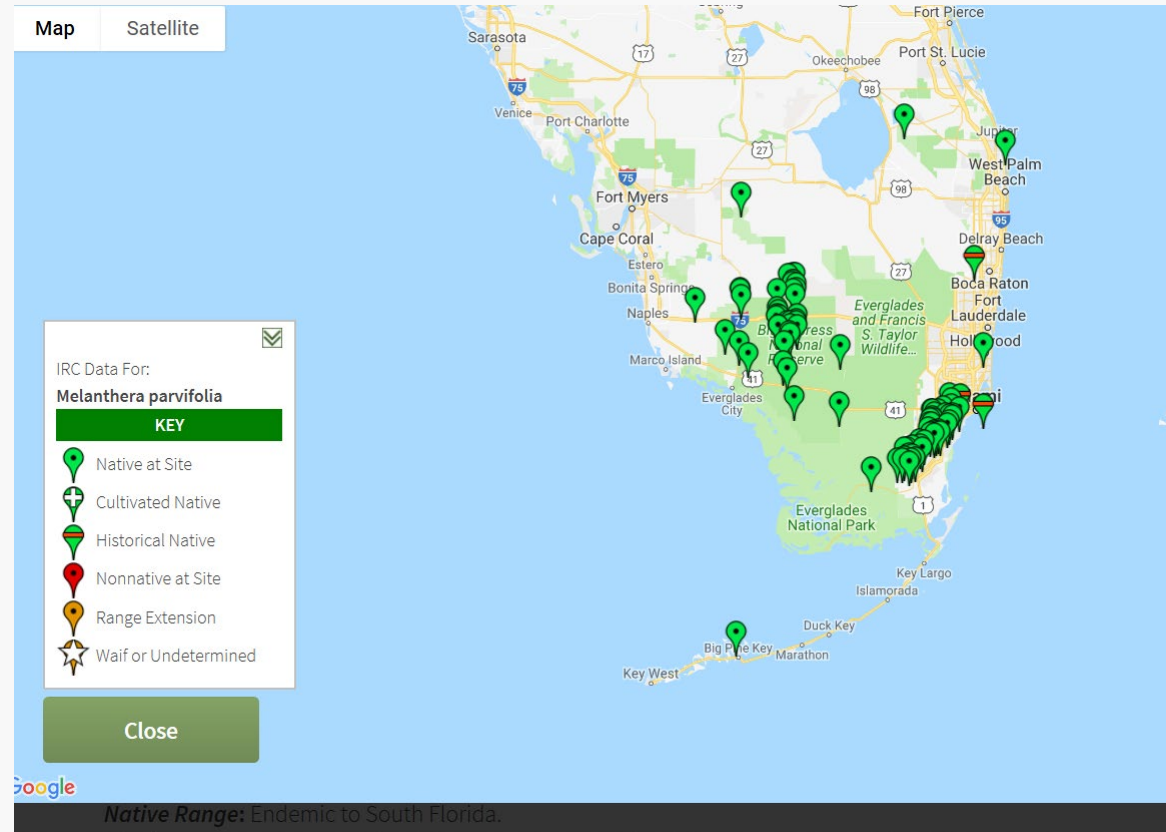


Epidendrum nocturnum (IRC)



R. Hammer

Melanthera parvifolia
Pineland blackanthers

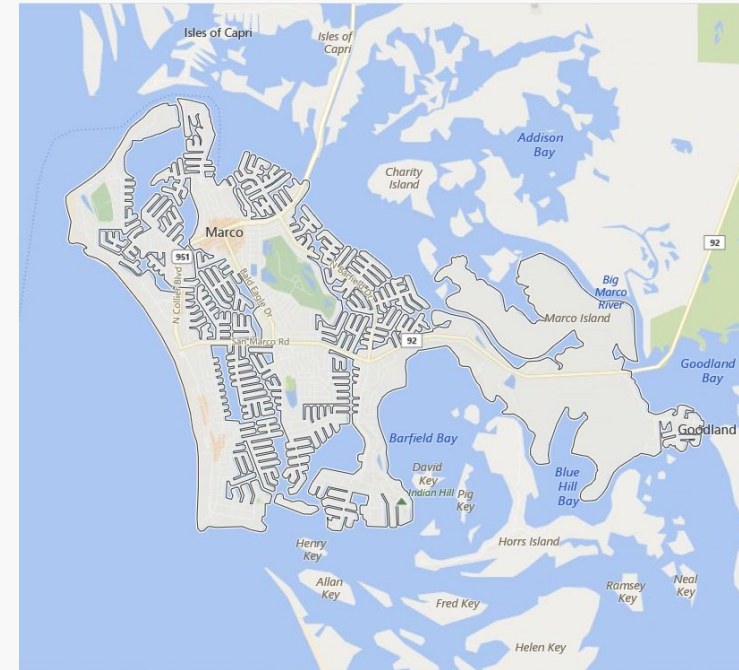
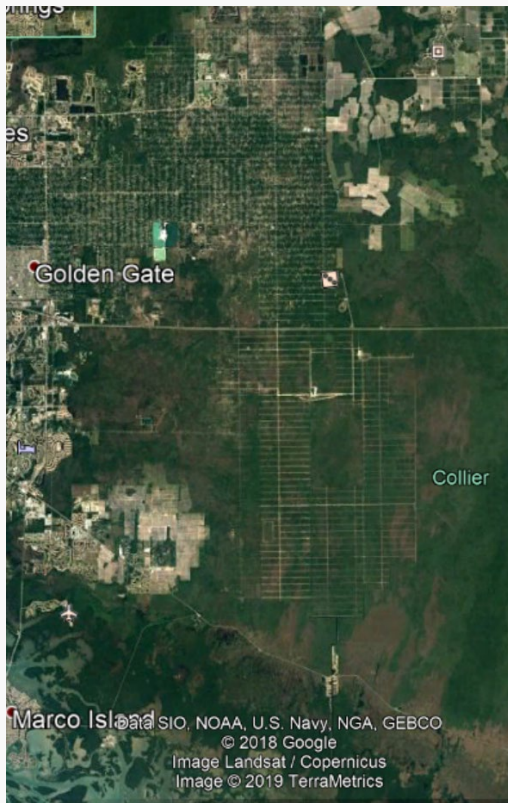


South Florida and Florida Endemics,
>110 taxa in South Florida, of which ~50
have been recorded in Palm Beach
County.

Local Biodiversity Matters



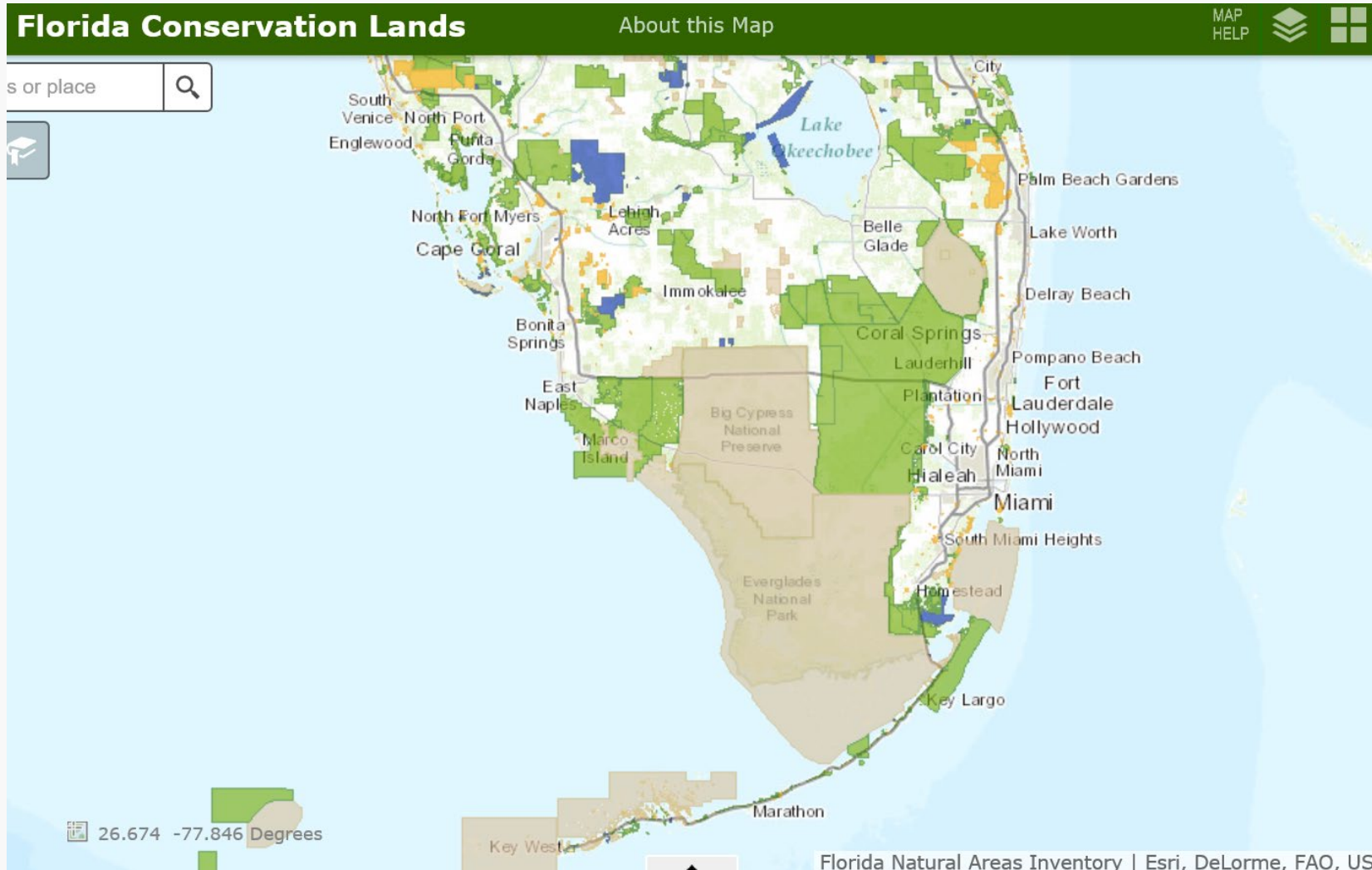
Species of Management Concern in Everglades National Park, hardwood hammocks.



- Hydrological transformation
- Coastal development & erosion
- Destruction of critical upland habitat in the interior
- Similar issues in St. Lucie and Indian River counties

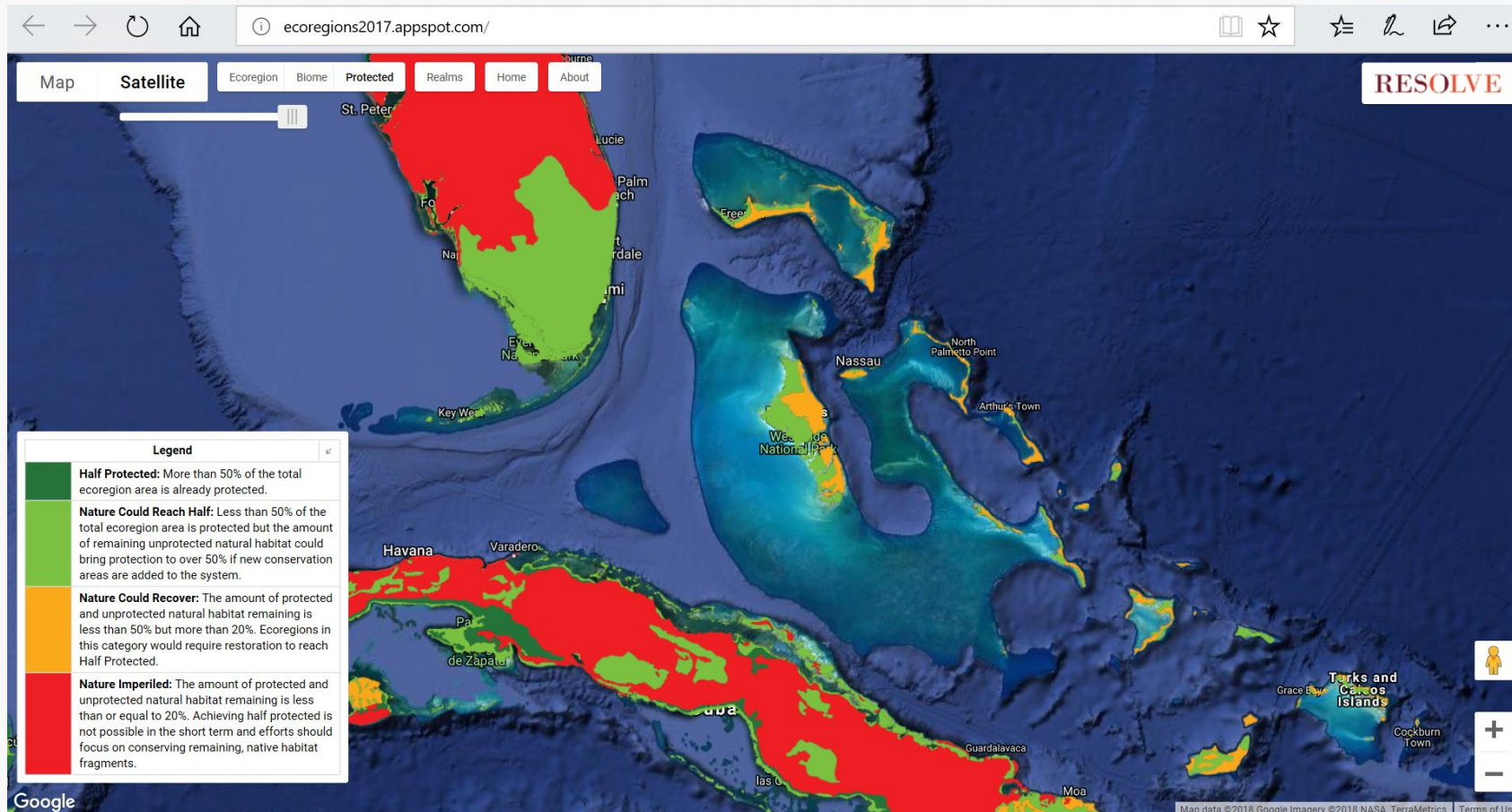


>50% of region in conservation; United Nations Convention on Biological Diversity (CBD) 2020 Protected Areas Target = 17%. So everything should be great.

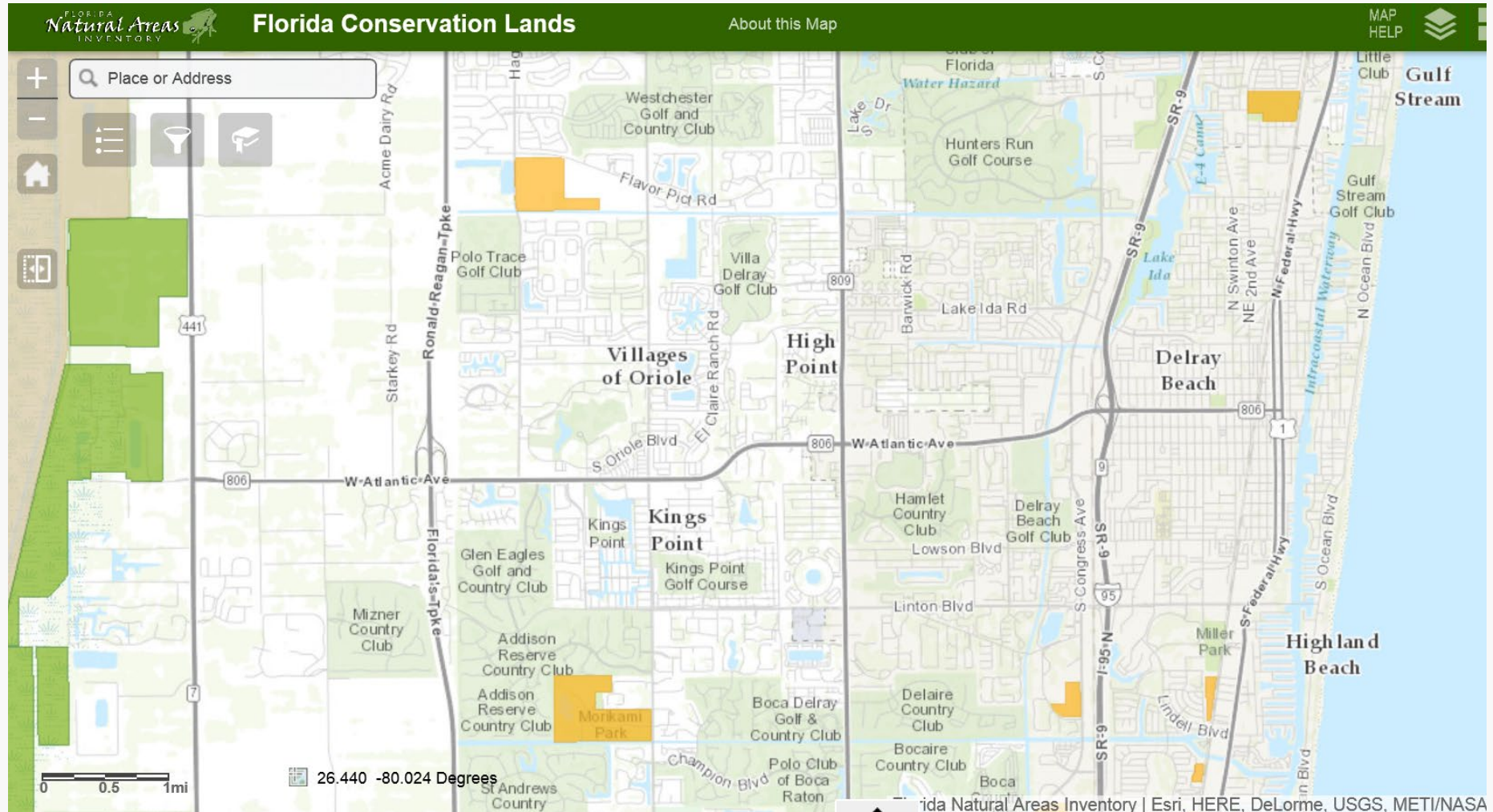


Nature Needs Half

846 Ecoregions, Protect 50% by 2050



Our Local Reality



Conservation areas in and around Delray Beach.

Fragmentation leads to inexorable loss

no species are lost from either pool. As fragmentation proceeds we eventually reach some critical level of reduction and fragmentation where species begin to die out. The susceptible pool loses species earlier and loses more species in total than does the resistant pool. When the resistant pool begins to lose species, it loses them very rapidly, because by this time the fragments are small and there is little habitat left.

Insularization causes extinctions over and above those expected through reduction in the total area of habitat. More species persist at equilibrium if the remaining habitat is concentrated into a single large patch rather than distributed over many small fragments (Figure 4). We stress that the results in Figure 4 are equilibrium patterns; depending on the relative time scales of habitat destruction and species'

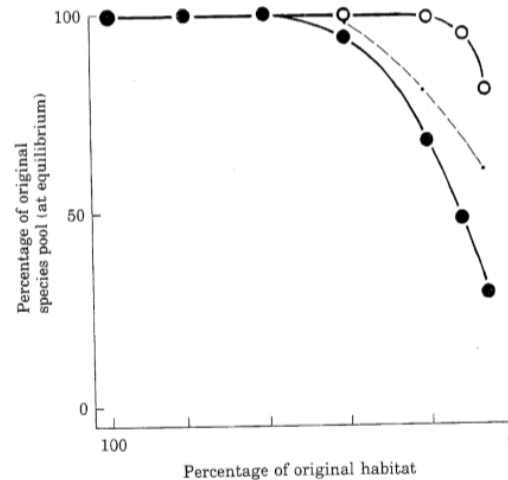


FIGURE 4. The number of species remaining in each species pool as fragmentation proceeds. Closed circles show the pool of species with large area requirements and low vagility. Open circles show the species with less stringent area requirements. The small dots connected by the dashed line depict the proportion of the first pool that would be present when the habitat is minimally fragmented. (From McLellan et al., 1986.)

Some species and groups go faster.



© Holly L. Salvato



© Holly L. Salvato



© Holly L. Salvato



© Holly L. Salvato



Some go slower.



Biodiversity, or biological diversity, is the diversity of life at the ecosystem, species, and even genetic level.

All biodiversity is important because of its **intrinsic value**, as well as its role is providing **ecosystem services** essential to human survival and wellbeing.

The Floristic Inventory of South Florida

The Floristic Inventory of South Florida 1995 – present

The Institute for Regional Conservation
Floristic Inventory of South Florida Database Query

home | IRC news | about us | programs | staff | contact us

Plants of South Florida - Plants by Conservation Area - Plants by County - Plants by Habitat
Quick Search - Advanced Search

Cyrtopodium punctatum (L.) Lindl.
Cowhorn orchid, Cigar orchid

Family: **Orchidaceae**
Group: **Monoec**
Substrate: **Epiphyte**
Habit: **Herb**
Arrestation: **Perennial**

Native Range: South Florida, Greater Antilles (not Jamaica), Central America and South America.
NativeRange Global Status: **Secure**
State of Florida Status: **Endangered**

Florida Native Area Inventory State Status: **Critically Imperiled**
JAC SOUTH FLORIDA Status: **Critically Imperiled**
SOUTH FLORIDA Occurrence: **Present**
SOUTH FLORIDA Native Status: **Native**
SOUTH FLORIDA Cultivated Status: **Cultivated**

Comments: This was ranked as imperiled in Rare Plants of South Florida (Gentry et al. 2002), but was re-ranked in 2013 based on a reassessment of the number of plants and occurrence confirmed as present (see vascular plant occurrence all management concerns in Conservation National Park, Gentry 2013: 148). It was then ranked as presumed extirpated in the Monroe County State, but has recently been rediscovered there at John Pennekamp Coral Reef State Park. You will see Natives for Your Neighborhood website for more information.

Copyright by Keith A. Bradley

NEW LINKS TO FLORISTIC WEBSITES

Floristic Inventory of the Florida Keys
Puerto Rico
Flora of the West Indies
TROPICOS.ORG
CRF.org

Other data on *Cyrtopodium punctatum* available from:

Cyrtopodium punctatum has been found in the following 14 conservation areas:

Conservation Area	Occurrence	Native Status
A.D. Croft Service Park	Presumed Extirpated	Native
Big Cypress National Preserve	Present	Native
Big Game Core Florida State Park	Presumed Extirpated	Presumed Extirpated
Cape Sable State Park	Present	Native, Cultivated Only
Castell Hammock Park	Presumed Extirpated	Presumed Extirpated
Castro-Gonzalez State Park	Present	Native
Chokoloskee Island State Park	Present	Native
Chrysler Park	Presumably Extirpated	Presumably Extirpated
Deering Estate at Cutler	Presumed Extirpated	Presumed Extirpated
Everglades National Park	Present	Native
Fakahatchee Strand Preserve State Park	Present	Native
John Pennekamp Coral Reef State Park	Present	Native
Lignumvitae Key Botanical State Park	Reported	Native
Palmetto Bluff State Park	Present	Native

Cyrtopodium punctatum has been found in the following 5 counties:

County	Occurrence	Native Status
Collier County		Native
Lee County		Native
Miami-Dade County		Native
Monroe County (Florida)		Native
Monroe County (Virginia)		Native

Cyrtopodium punctatum has been found in the following 7 habitats:

Habitat
Swampy Forest
Herb Forest
Herb Forest
Herb Forest
Herb Forest
Herb Forest
Herb Forest

All Images:

Castell Hammock Park

County: Miami-Dade County
Size: 114.79 acres
Latitude: 25.59772° Longitude: -80.45528°
Section: 17 Township: 56 Range: 39
Notes: Historically spelled as Costello Hammock or Costello's Hammock. For a map and more information click [here](#).
Managing Agency: Miami-Dade County Department of Parks and Recreation

There are 379 taxa reported for Castell Hammock Park

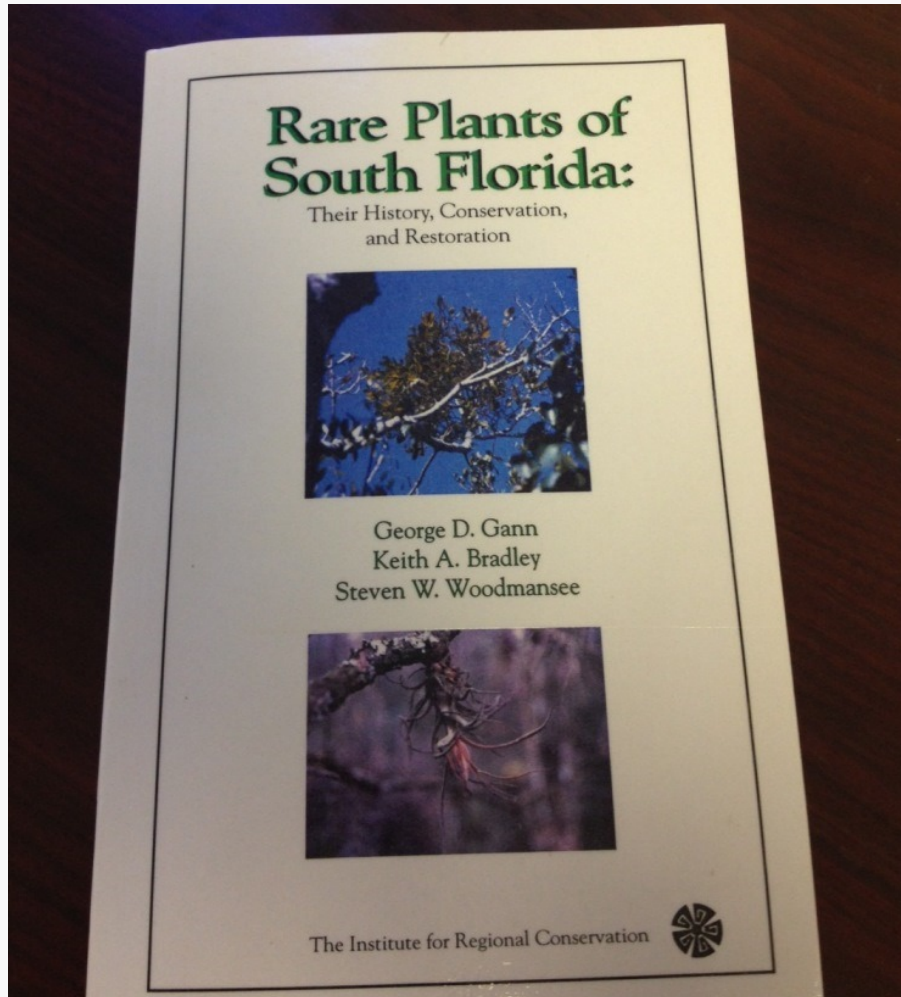
Group By Family: [Show Results](#)

Scientific Name:	Occurrence:	Native Status:	Introduced Status:	Invasive Status:	Cultivated Status:	Reference:	Voucher:
Acanthaceae							
Barleria cristata	Present	Not Native, Naturalized	Introduced	Potentially Invasive		2772	2772
Ruellia blechum	Present	Not Native, Naturalized	Introduced	Ruderal		14757	
Ruellia simplex	Present	Not Native, Naturalized	Introduced	Potentially Invasive		14757	
Ruellia succulenta	Present	Native	Not Introduced	Native		14757	
Amaranthaceae							
Achyranthes aspera var. <i>aspera</i>	Present	Not Native, Naturalized	Introduced	Ruderal		14757	
Amaranthus spinosus	Present	Not Native, Naturalized	Introduced	Ruderal		14757	
Anacardiaceae							
Mangifera indica	Present	Not Native, Naturalized	Introduced	Invasive		14757	
Metopium toxiferum	Present	Native	Not Introduced	Native		14757	
Rhus copallinum	Present	Not Native, Naturalized	Not Introduced	Native		14757	
Schinus molle	Present	Not Native, Naturalized	Introduced	Invasive		14757	
Toxicodendron radicans	Present	Native	Not Introduced	Native		14757	
Anemiaceae							
Anemia adiantifolia	Present	Native	Not Introduced	Native		14757	
Annonaceae							
Annona glabra	Present	Native	Not Introduced	Native		14757	
Apiaceae							
Cyclopium leptophyllum	Present	Not Native, Naturalized	Introduced	Ruderal		14757	
Apocynaceae							
Anadenia berteroi	Present	Native	Not Introduced	Native		14761	
Asclepias curassavica	Present	Not Native, Naturalized	Introduced	Invasive		14757	
Asclepias verticillata	Present	Native	Not Introduced	Native		14761	
Catharanthus roseus	Present	Not Native, Naturalized	Introduced	Ruderal		14756	
Echites umbellatus	Present	Native	Not Introduced	Native		14757	
Metastelma scoparium	Present	Native	Not Introduced	Native		14757	
Aquifoliaceae							
Ilex cassina	Present	Native	Not Introduced	Native		14757	
Ilex krugiana	Present	Native	Not Introduced	Native		14757	
Araceae							
Epipremnum pinnatum	Present	Not Native, Cultivated Only	Not Introduced				
Epipremnum pinnatum cv. <i>Aureum</i>	Present	Not Native, Naturalized	Introduced	Invasive		14757	
Monstera deliciosa	Present	Not Native, Cultivated Only	Not Introduced	Cultivated Only	Cultivated	14756	

SOME QUESTIONS

- Are very small, fragmented conservation areas important?
- How well does the current conservation system protect rare vascular plants?
- Have there been regional extirpations?

2002



Bulbophyllum pachyrachis

1 in 4 native plant species were critically imperiled or possibly extirpated.
About 8% were reported as possibly extirpated (now down to about 6%)



'Rarest of the rare' plants face endangerment in the Florida Everglades



Washington Post, March 2015.

Flora of Broward County (today's numbers)

731 native taxa
10-20% are likely extirpated already

Working list of 150+ taxa being reviewed

Extirpations in South Florida
(2002-present)
6%, slight increase expected

Extirpations in Florida Keys
(2007-present)
13%, likely to go up



Bidens laevis



Pleopeltis astrolepis



Calopogon multiflorus



Carya floridana

Global Change

Restoration: a Global Perspective

35 Years Ago

“Particularly hazardous to Florida is the potential for a **global climate change** related to tropical deforestation and the excess burning of fossil fuels. A slight **rise in sea level** could destroy many of our native plant communities...”

“In the United States, and particularly in Florida, preservation has been the basis of the native plant movement. More recently, **restoration** as a conservation alternative has received some attention, although it is certainly not accepted by all.”

“By concentrating on **sustainable development**, rather than preservation, as a goal international conservation movements seem to be moving ahead in terms of meeting the environmental needs of the future.”



George 1985



Find on page

Enter text to search

No results



Options ▾

Potential Future Forest Type Changes

The links below allow comparison of maps of potential forest-type changes according to the various GCM scenarios.

IMPORTANT: Make sure you read the help file before interpreting the changes.

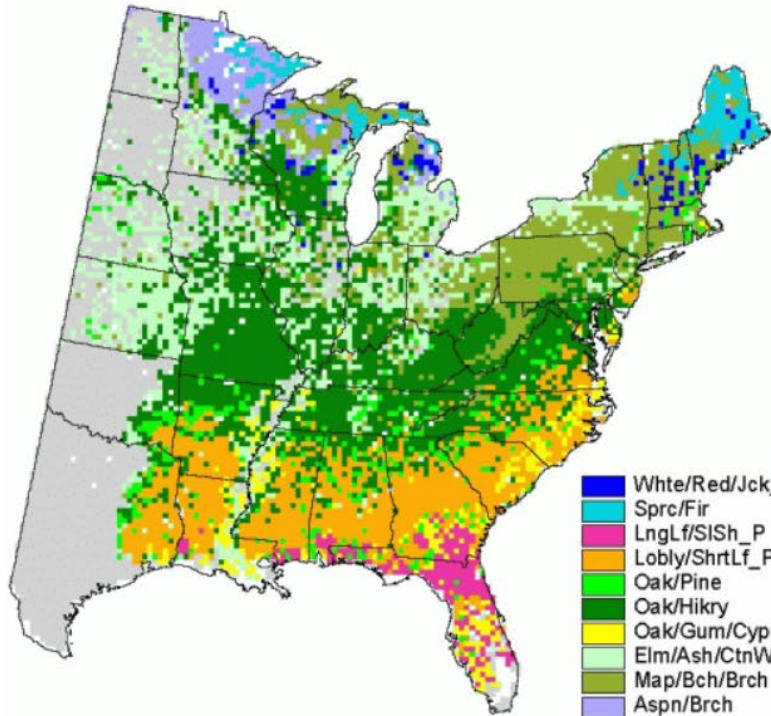


[View Summary of Changes](#)

Climate Scenario Menu

Choose Forest Type from Menu

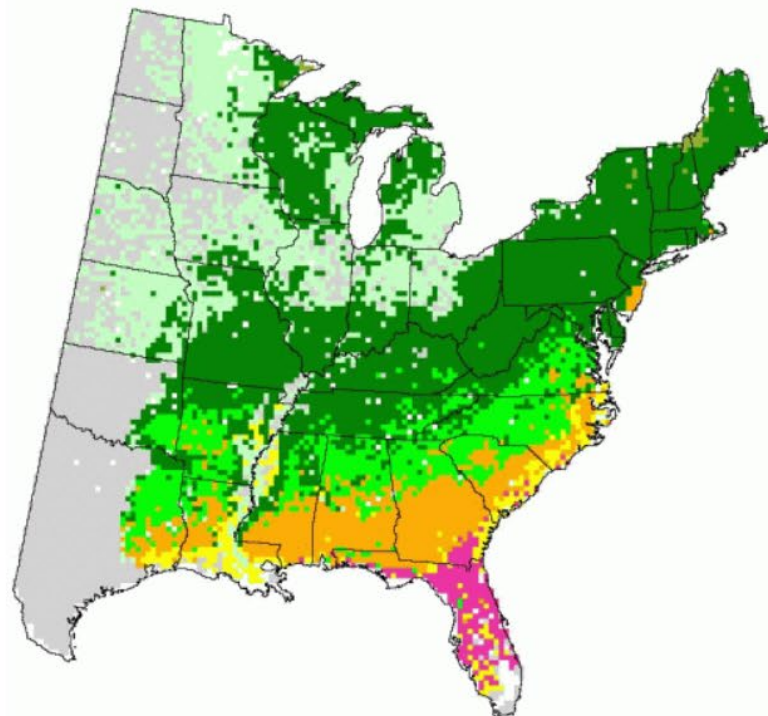
Current FIA



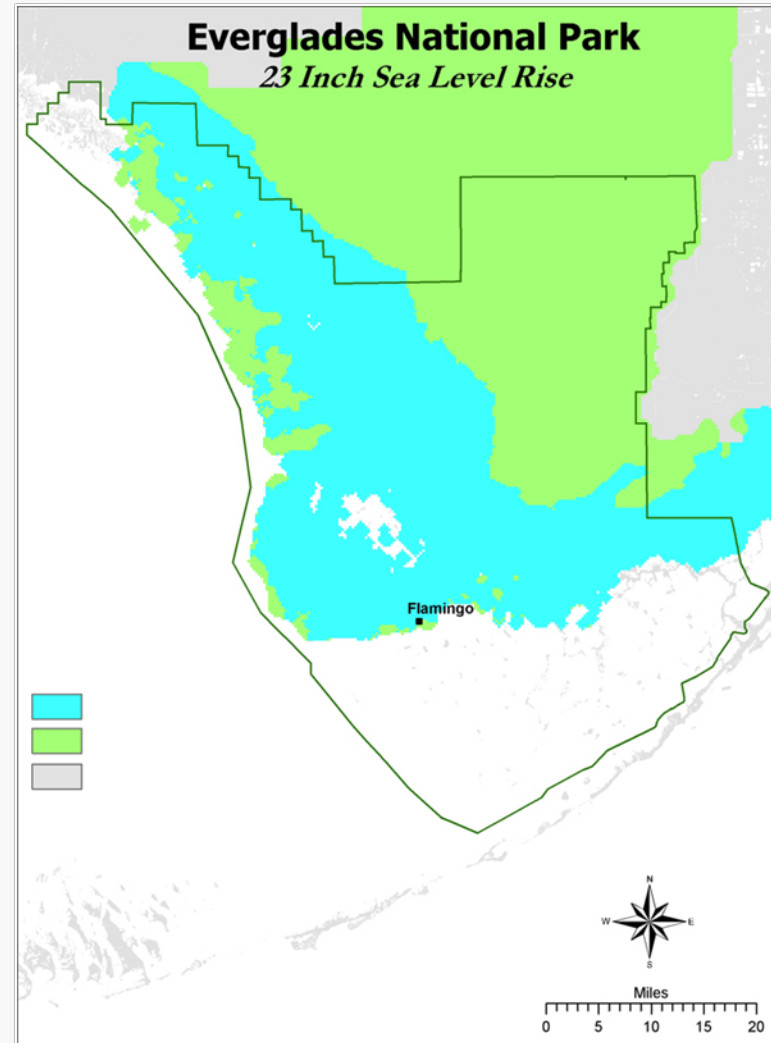
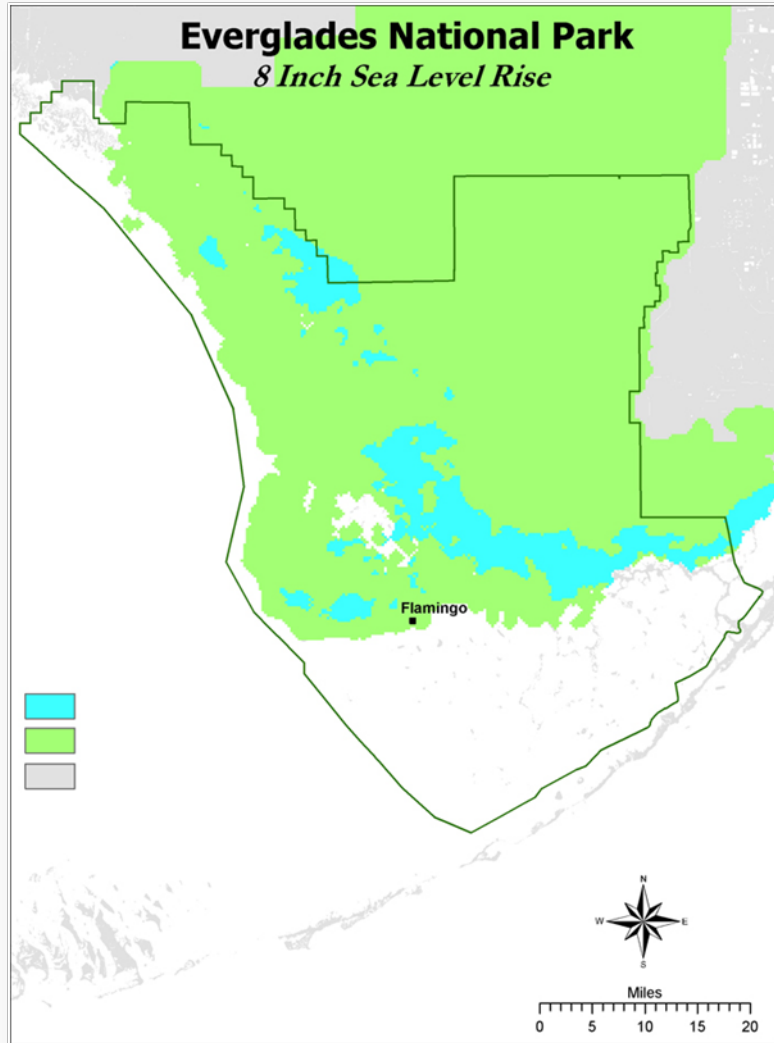
Climate Scenario Menu

Choose Forest Type from Menu

Hadley - High



Sea Level Rise



Everglades National Park scenarios by end of this century from 2007 IPCC projections.

Extreme Storms, Pulse Events, and Ecosystem Reassembly



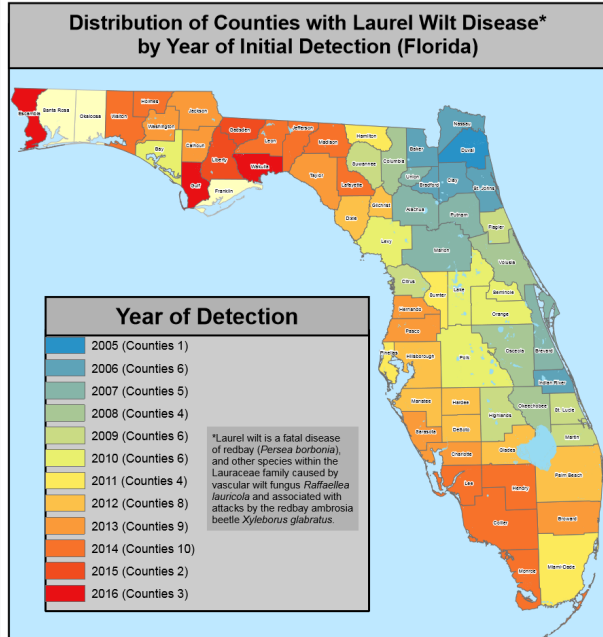
ENVIRONMENT

Could more powerful hurricanes threaten South Florida's disappearing forests?

BY JENNY STALETOVICH

MARCH 25, 2019 06:00 AM, UPDATED 7 HOURS 44 MINUTES AGO





Invading Pests and Diseases

Bromeliad Weevils in Florida

Photo by J.L. Castner/UF

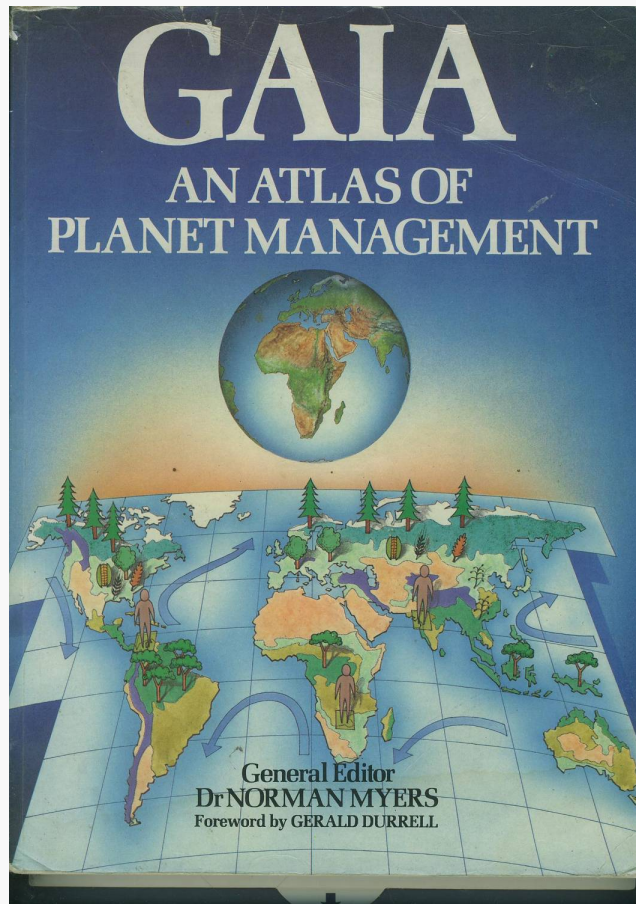
Emerald Ash Borer Information Network

This Website is part of a multinational effort to bring you the latest information about emerald ash borer.

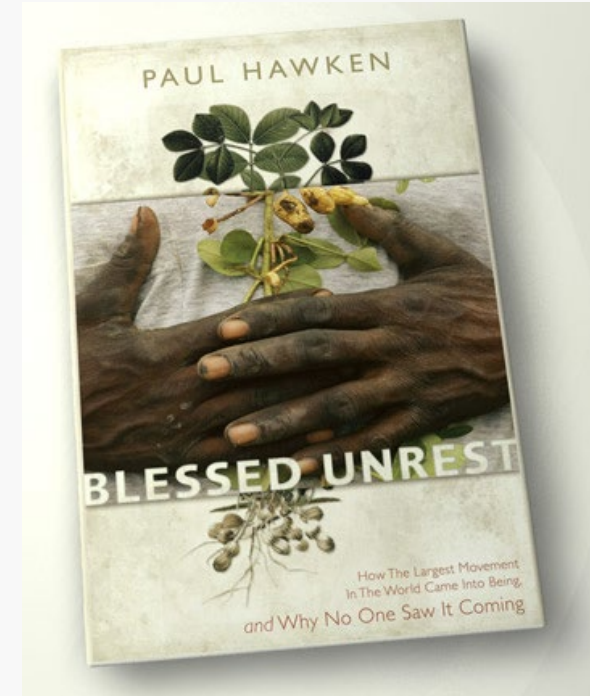
Esri, USGS | Esri, HERE, Garmin, NGA, USGS

Ecological Restoration

The Key to Our Future



In 1984 **Norman Myers** estimated that there were 12,130 international non-profit groups (INGOS) worldwide, mostly dealing with environmental and social issues.



Paul Hawken 2007: estimated that there were more than 1,000,000 non-profit groups and community organizations dedicated to the “environmental and social justice movement”.



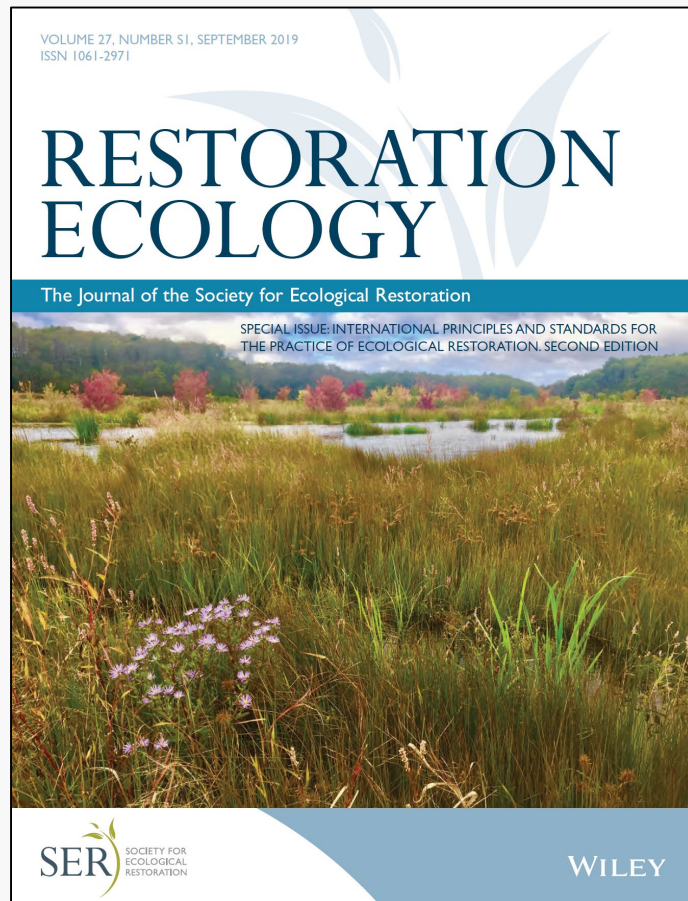
Home / News and Stories / Press release

01 MAR 2019 | PRESS RELEASE | ECOSYSTEMS

New UN Decade on Ecosystem Restoration offers unparalleled opportunity for job creation, food security and addressing climate change

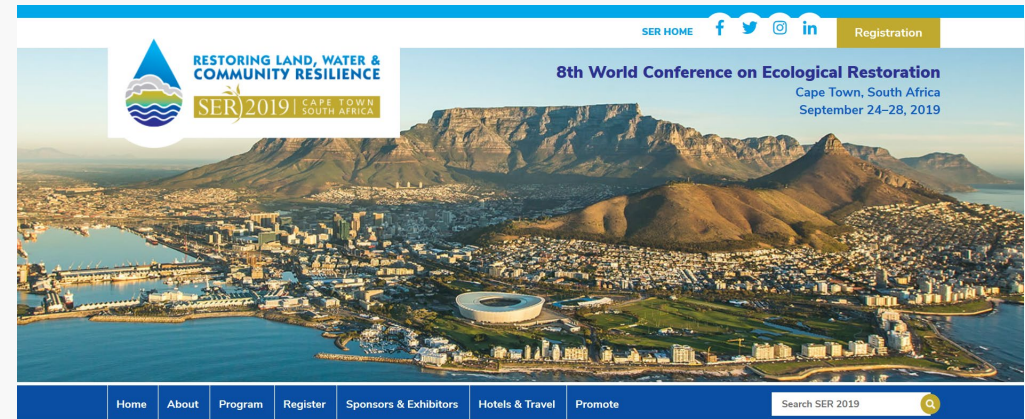
©FAO Giulio Napolitano

“The UN Decade on Ecosystem Restoration is both urgently needed and globally appreciated,” said George Gann, SER International Policy Lead. “Achieving the goals of this new UN Decade will require continued enthusiasm and funding for this work, as well as a common understanding of how to design and implement successful restoration projects that proactively and collaboratively engage local communities.” SER Media Release, www.ser.org



www.ser.org/Standards

Updated International Principles and Standards launched at SER2019 in South Africa, simultaneously in *Restoration Ecology* and by SER.



Global and Local Perspectives



World Conference on Ecological Restoration
Cape Town, South Africa 2019



Restoration site, No Name Key
National Key Deer Refuge, FL, USA

Eight Principles Underpinning Ecological Restoration



1 ENGAGES
STAKEHOLDERS

2 DRAWS ON
MANY TYPES
OF KNOWLEDGE



3 IS INFORMED BY
NATIVE
REFERENCE
ECOSYSTEMS,
WHILE CONSIDERING
ENVIRONMENTAL CHANGE



4 SUPPORTS
ECOSYSTEM
RECOVERY
PROCESSES



5 IS ASSESSED AGAINST
CLEAR GOALS
AND OBJECTIVES
USING MEASURABLE
INDICATORS



6 SEEKS THE
HIGHEST
LEVEL OF
RECOVERY
POSSIBLE



8 IS PART OF A
CONTINUUM
OF RESTORATIVE
ACTIVITIES

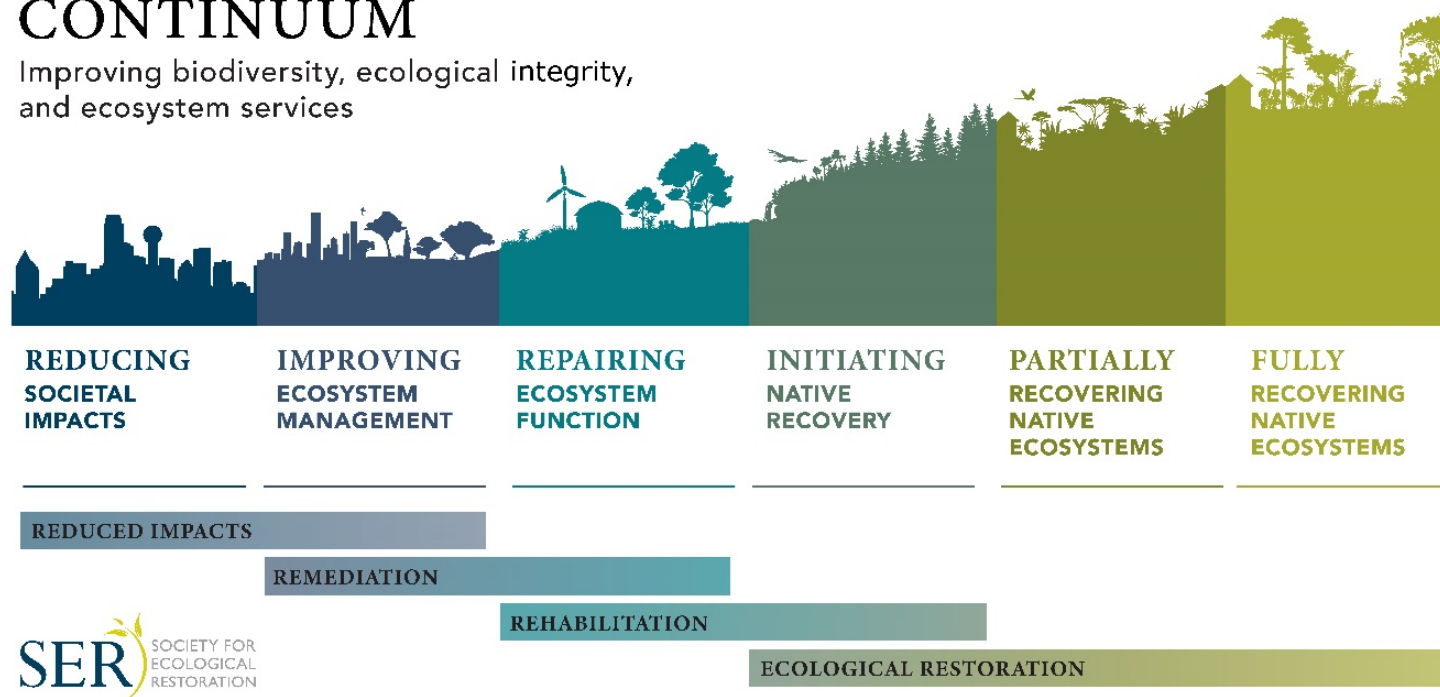


7 GAINS
CUMULATIVE
VALUE
WHEN APPLIED
AT LARGE SCALES



THE RESTORATIVE CONTINUUM

Improving biodiversity, ecological integrity,
and ecosystem services



All restorative activities matter, no matter how small. But some activities may not be restorative at all (e.g., some mitigation, afforestation of native savanna).

How Can You Help?

Collaborate, Collaborate, Collaborate!



Florida Native Plant Society

Who We Are ▾ What We Do ▾ Native Plants ▾ Resources ▾ Events ▾ Chapters ▾ Join / Support ▾

Renewal!
Register Now
May 17-20
Miami, FL

[Join](#) [Donate](#)



Tropical Audubon Society

South Florida's Voice of Conservation

Home ▾ Birds ▾ Conservation ▾ Programs ▾ Our Story ▾ Media Coverage ▾ Get Involved ▾ Archives

Support Our Mission
Keep South Florida's Voice of Conservation clear and strong. Join, Give and Volunteer! You'll be helping TAS champion the environment and grow our Mission.

[Join](#) [Give](#) [Volunteer](#)

Upcoming Events
Apr 29 Members Migration: Potluck Picnic & Silent Auction @ TAS
May 05 Key Largo Hammocks State Botanical Site: Birds, Butterflies and Native Plants
May 06 Guided Tours of Historic Doc Thomas House
May 12 Bird & Wildlife Weekend at Fairchild

Mission
To conserve and restore South Florida ecosystems, focusing on birds, other wildlife and



FANN

Florida Association of Native Nurseries

Growing, planting and promoting Florida native plants for sustainable landscapes.

Plants ▾ Plant Communities ▾ Professionals ▾ About Us ▾ News ▾ Learn More ▾ Membership

Know Your Natives: Navigating the Hamelia Mess

Find a specific plant


Enter the first few letters of the common or botanical name, then select a plant from the list.

Looking for...

Or, choose a plant type below:

or select plant type

Find a nursery or grower



NatureServe

A Network Connecting Science with Conservation

Actionable Knowledge to Sustain Biodiversity

Providing Solutions for Conservation and Natural Resource Management

MacArthur Award for Creative & Effective Institutions

Subscribe to our e-mails

ICN Red List of Threatened Species™

2017-3

Log in | E&A | Contact | Terms of use | IUCN.org

Initiatives ▾ News ▾ Photos ▾ Partners ▾ Sponsors ▾ Resources ▾ Take Action

Red List search (terms) OTHER SEARCH OPTIONS Discard filters

UNRELEASABLE	REASSSESSED	CITIZENLY MONITORED	REMOVED FROM THE RED LIST	OTHER
0	0	0	0	0

Click on Rohingya refugees learn to corral elephants in article, originally published by AFP, highlights how IUCN, IUCN, lists are using life-sized elephant puppets made of colourful myra refugees in Bangladesh's Kutupalong. (2022)

The Jewel in the crown of the Mekong Delta Limestone karst hills of Kampong Province in Cambodia and neighboring on in Vietnam, which together form the Mekong Delta, is home to possibly the largest concentration of e. (2022)

Ime: An interview with Red List assessor Dmitry Telnov: pyroic beetles are beetles which depend on dead and at least part of their lifecycle. It is estimated that there are rent saproxytic beetle species in Europe, pe. (2022)

SHARON GOATRASS
Agilops sharonensis
© Ori Fragan-Sagor

Amazing




Florida Wildflower Center

Florida's Native Wildflowers

Working for wildflowers
Funds from the State Wildflower license plate protect and preserve Florida's native flowering plants. Get yours today!

When you purchase or renew the plate, \$12 is given to the Florida Wildflower Center.



25th Anniversary


The Convention ▾ Caracas Protocol ▾ Nagoya Protocol ▾ Programmes ▾ Information ▾ Secretariat

25th Convention on Biological Diversity

20 April 2018
Message of the Executive Secretary of the Convention on Biological Diversity Dr. Cristiana Paiva Palmer on the Occasion of Earth Day

Executive Secretary
Cristiana Paiva Palmer


- 16 April 2018: 10th session of the Commission on Sustainable Development
- 12 April 2018: Public lecture and discussion: "Scaling from 2020 to 2050: Building resilience - the communications challenge"
- 26 April 2018: Day of opening devoted to the future of culture and biodiversity at Cambridge University, attended by scientists.
- 20 April 2018: International Women's Day 2018
- In the last 100 years we have made good progress in making women feel their extraordinary wisdom. They are increasingly



ARTISTS ALLEY

Greater Orlando Board of Commerce
140 NE 1st Street
Orlando, FL 32804
Phone: (407) 252-0500

DELAZ BEACH ▾ CHAMBER ▾ ECONOMIC DEVELOPMENT ▾ BUSINESS DEVELOPMENT



Identify Opportunities and Celebrate Success!



Restoring the Gold Coast

Major Sponsors



Sponsors



Collaborators



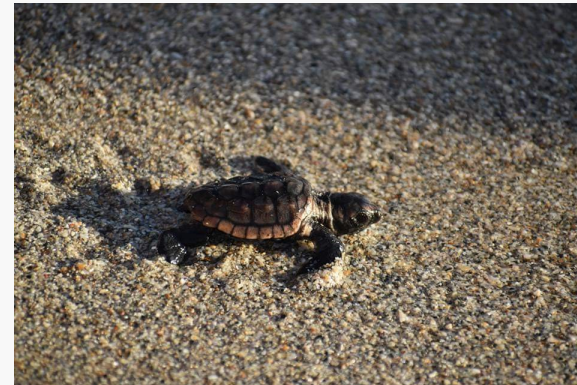
What We Have Done Well



move sand



plant sea-oats and a few other species



recover sea turtles

Dune Assessments



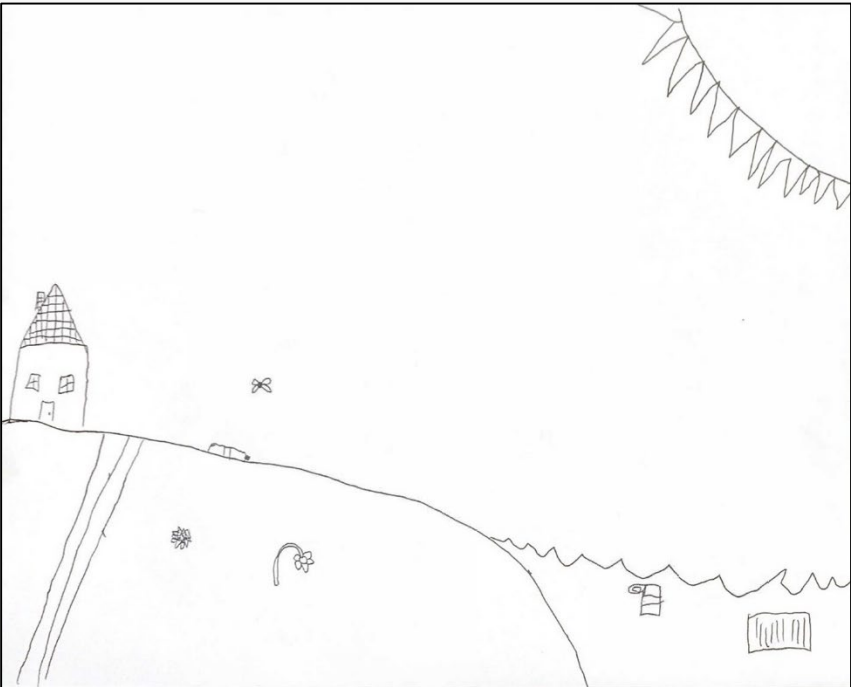
New Discoveries



Outreach



Degraded
Dune



Restored
Dunes





BIODIVERSITY STARTER PLANT KITS

"The natural world protects us so we must conscientiously protect it back."

Kimberlee Pompeo, Barrier Island resident for 18 years, Florida Federation of Garden Clubs District X Vice Chair for the Barrier Islands

IRC has the knowledge and tools to make our dunes healthier, more beautiful, and more resilient.

As part of our **Restoring the Gold Coast** program, IRC is offering native Biodiversity Starter Plant Kits for coastal gardens in southern Palm Beach County.

Each kit comes with hand-selected native plants perfect for enhancing your native beach dune system or coastal garden. This service helps make the restoration of native habitats on barrier islands cost effective and time efficient.



OUR STARTER PLANT KITS

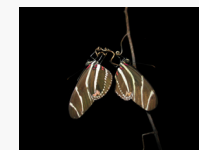
Beach Dune and Coastal Grasslands Starter Plant Kits

Each beach dune starter kit contains 5 plants native to the beaches and dunes of southern Palm Beach County. Our Spring 2020 Kits contain: (1) **Baycedar**, (1) **Sea-lavender**, (1) **Inkberry**, (1) **Seaside joyweed** or **Yellow joyweed**, and (1) rare plant surprise. Each kit contains (1) 10" container, (2) 6" containers, and (2) 3-4" containers. These kits are perfect for coastal dunes with an active pioneer zone with established sea-oats, native dune vines, and other pioneer species. The price for each kit is \$75.00.



Four Larval Host – 10 Coastal Butterflies

Zebra Heliconian



Cassius Blue



Large Orange Sulphur



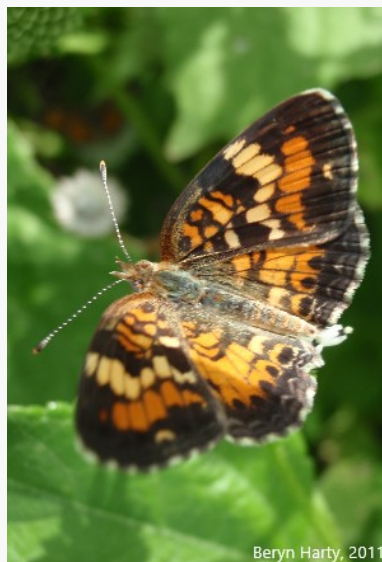
Martial Scrub-Hairstreak



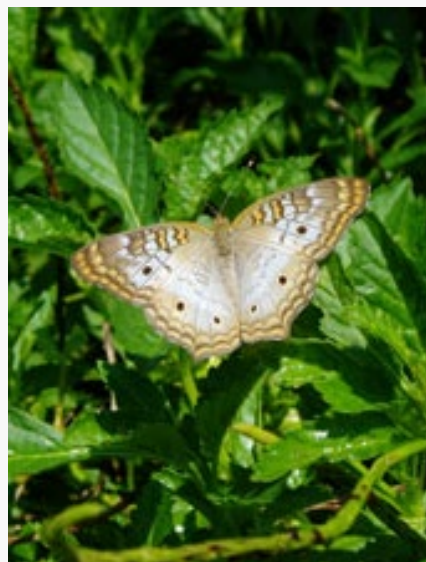
Common Buckeye



Gray Hairstreak



Phaon Crescent



White Peacock



Gulf Fritillary



Julia Heliconian

40 species planted



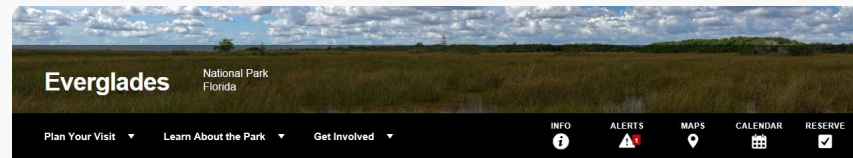
Seeds and plants collected

Green Delray Program and Lake Ida Parcel Restoration





We Must Restore Degraded Ecosystems, Small and Large, Fragmented and Connected



[NPS.gov](#) / [Park Home](#) / [Learn About the Park](#) / [Science & Research](#) / [Research Programs](#) / [Comprehensive Everglades Restoration Plan \(CERP\)](#)

Comprehensive Everglades Restoration Plan (CERP)

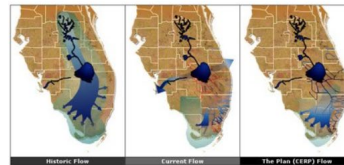


Image Courtesy of [EvergladesPlan.org](#)

The CERP was authorized by Congress in 2000 as a plan to "restore, preserve, and protect the south Florida ecosystem while providing for other water-related needs of the region, including water supply and flood protection." At a cost of more than \$10.5 billion and with a 35+ year time-line, this is the largest hydrologic restoration project ever undertaken in the United States.



Zip Code 33170 search for Native Plants, Habitats and Wildlife

This is a long narrow zip code area running from the Florida Turnpike west to the C111 Canal and from about SW 216th Street south to SW 232nd Street in Miami-Dade County.

Native Plants

• Click below to obtain a list of native plants that are recommended for 33170, and to see photos and learn more about them.

Whether you are just beginning a new native plant project, or will be introducing native plants into an existing garden, this is the place to find out which native plants are right for your specific area.

Get your plant list for 33170 !

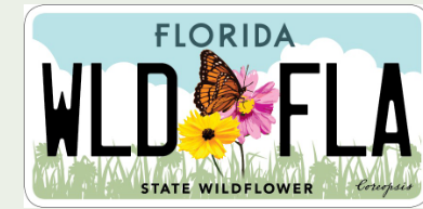
Advance search for plants

[Find Native Plants!](#)

[Acknowledgements and past sponsors](#)

[Become a sponsor!](#)

Major Sponsor:



Emergent Sponsors:



Precise Data Encouraging the Use of
Native Species Within Their Native Ranges
(2019, >71,000 users, >742,000 page views)

We Want to Increase Success

- 1) In the Garden
- 2) For Conservation
- 3) Increase Connectivity
- 4) Recover Rare Species

PRINTER FRIENDLY VERSION

Please scroll to the bottom for more images.

Piriqueta, Pitted stripeseed
Piriqueta cistoides subsp. caroliniana
Passifloraceae

General Landscape Uses: Primarily recommended for natural landscapes and habitat restorations. Also wildflower gardens.

Availability: Grown by enthusiasts and occasionally by native plant nurseries.

Description: Small herbaceous wildflower.

Dimensions: About 4-8 inches in height. Usually taller than broad, but sometimes falling over and forming small patches.

Growth Rate: Fast.

Range: Southern United States south to the Monroe County Keys; West Indies. In the Monroe County Keys, apparently disjunct from Miami-Dade County to the pine rocklands of Big Pine Key; also collected once on Key Largo, but perhaps introduced there.



[Map of select IRC data from peninsular Florida.](#)



[Map of suggested ZIP codes north to Indian River and Manatee counties.](#)



[Map of ZIP codes with habitat recommendations north to Martin and Charlotte counties.](#)

Habitats: Pinelands, prairies and marshes.

Soils: Moist to seasonally wet, well- to moderately well-drained sandy or limestone soils, without humus.

Nutritional Requirements: Low; it grows in nutrient poor soils.

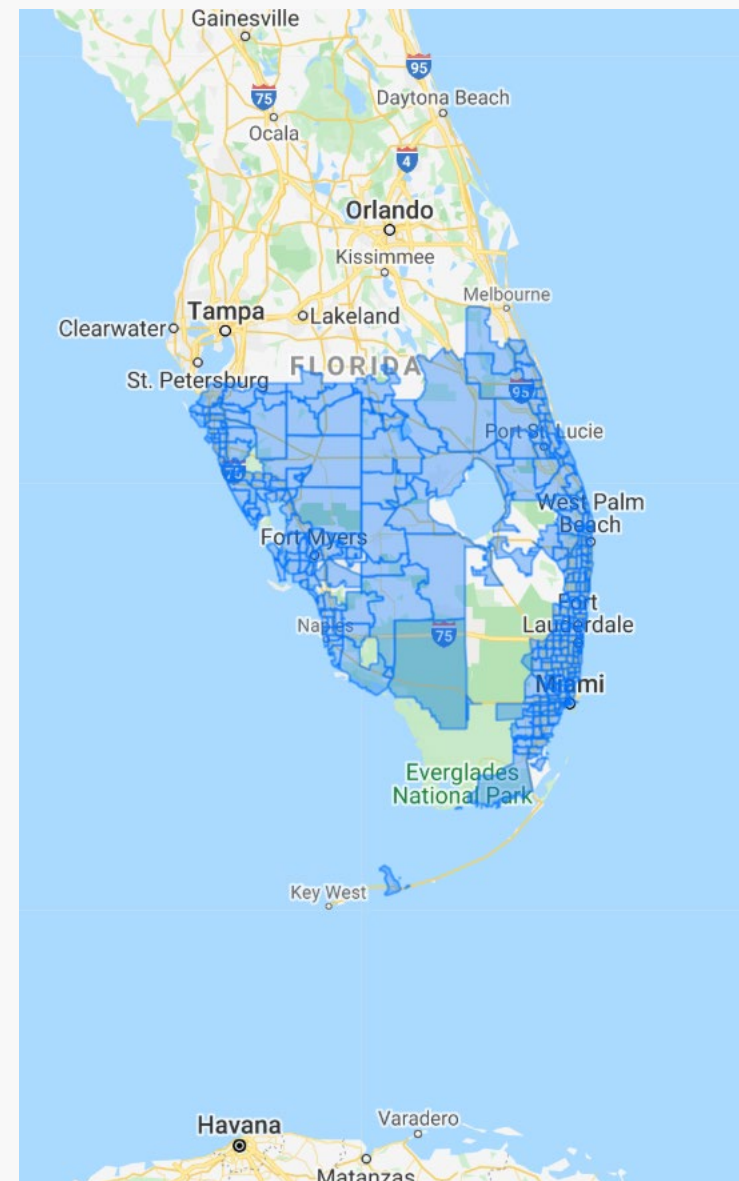
Salt Water Tolerance: Low; does not tolerate long-term flooding by salt or brackish water.



Copyright by: James Johnson, 2014

In habitat, Everglades National Park, Florida

[Expand](#)



Plant America

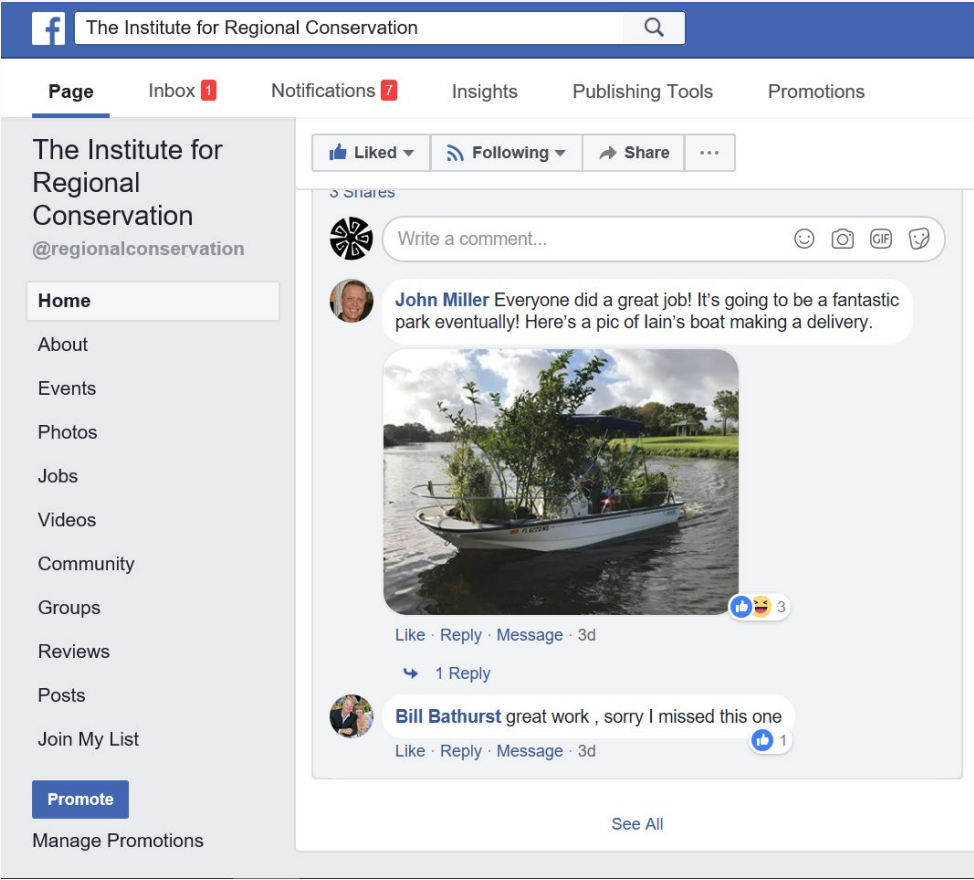
Inspiring Gardens Across the Americas

LEARN MORE ➔



The theme for President Gay Austin's administration is **Plant America**, a singularly focused initiative on gardens and gardening. Both a call to service and a description of what NGC clubs do, Plant America supports the main reason that people say they join a

Be Creative and Have Fun



The screenshot shows the Facebook profile page for 'The Institute for Regional Conservation'. The page header includes the name, a search bar, and navigation tabs for Page, Inbox (1), Notifications (7), Insights, Publishing Tools, and Promotions. The profile picture and name are visible, along with the handle @regionalconservation. A left-hand navigation menu lists: Home, About, Events, Photos, Jobs, Videos, Community, Groups, Reviews, Posts, Join My List, Promote, and Manage Promotions. The main content area shows a post by John Miller with the text: 'Everyone did a great job! It's going to be a fantastic park eventually! Here's a pic of Iain's boat making a delivery.' Below the text is a photograph of a small boat on a river carrying several large potted plants. The post has 3 likes and 1 reply. A reply from Bill Bathurst says: 'great work , sorry I missed this one'. At the bottom of the post area is a 'See All' link.



A Rain Garden is a planted area of your yard where rain water collects. Instead of running off of a driveway or other hard, impervious surface and in to a storm drain or canal unfiltered, rain water collected in a rain garden has time to absorb into the ground, assisted by the root systems of the plants.

Benefits include reducing stormwater flooding, improving water quality, increasing infiltration into the aquifer, and attracting wildlife benefits when native plants are used.

(image source: [The Nature Conservancy](#))

Learn more about your local water resources, using rain gardens to manage stormwater and attract wildlife, and the benefits of rain barrels in the presentation below.

The Institute for Regional Conservation created a list of rain garden plants for Hollywood residents. Find more native plants using their tool [Natives for Your Neighborhood](#).

Wondering where to find those native plants? The Broward Native Plant Society, Coonite Chapter, have created [a list](#) of local nurseries that sell native plants.



The poster features the title 'Water Conservation: Rain Barrels and Native Plants'. Below the title, it says 'A joint workshop between the City of Hollywood and the City of Hallandale'. Logos for 'Sustainable HOLLYWOOD' and 'Hallandale Beach' are visible. A large image of a brown rain barrel is on the right side.



The list is titled 'Native Plants for Rain Gardens'. It is divided into two sections:
Plants that need consistently moist or flooded soil:
- *Water hyacinth*
- *Water lettuce*
- *Water mimosa*
- *Water wisp*
- *Water chestnut*
- *Water hyacinth*
- *Water lettuce*
- *Water mimosa*
- *Water wisp*
- *Water chestnut*
Plants that can tolerate periodically flooded soil:
- *Water hyacinth*
- *Water lettuce*
- *Water mimosa*
- *Water wisp*
- *Water chestnut*
- *Water hyacinth*
- *Water lettuce*
- *Water mimosa*
- *Water wisp*
- *Water chestnut*

Rain Barrels

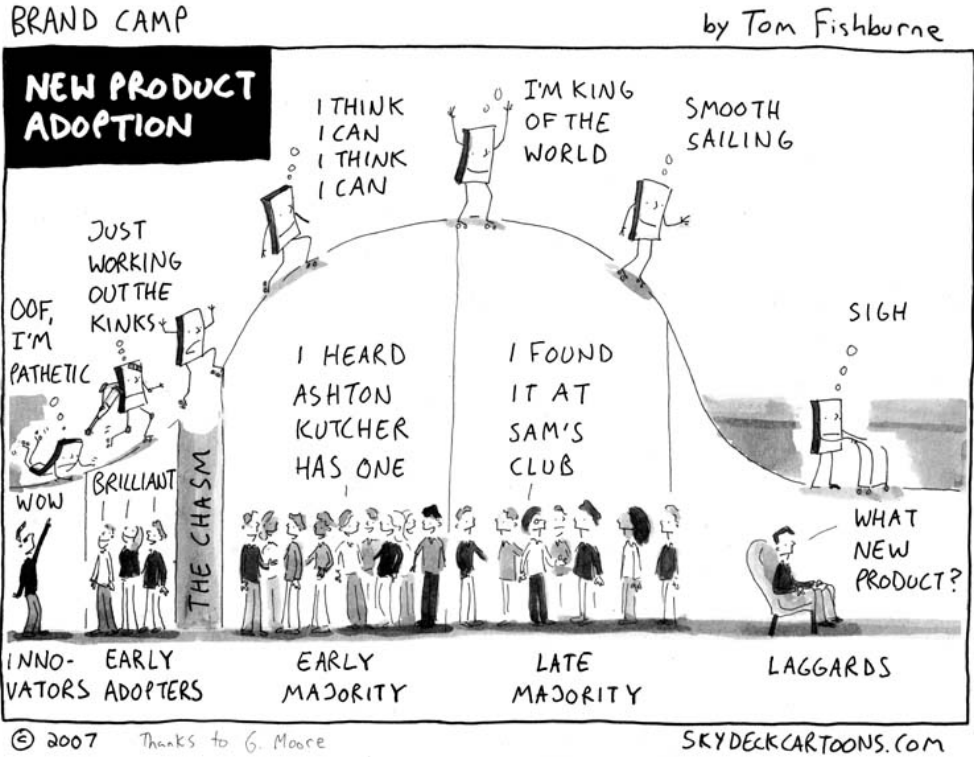
Nationally, 30% of residential water use is outdoors. In Florida that average can be as much as 50% primarily for landscape irrigation. That water must be extracted from our aquifer, treated, and distributed to our homes all of which uses energy.

Save water, energy and money by installing a rain barrel on your home.

In addition to the aforementioned savings, rain barrels also help with stormwater



Play the Long Game



*The Institute for Regional Conservation
Proudly Presents*



Anniversary

Thursday, November 7th, 2019 at 5:00 pm - 8:00 pm
At the offices of IBCoSF Media in Delray Beach
2559 Webb Avenue #06 Delray Beach, FL 33444

Awards | Raffles | Reception

RSVPs are greatly appreciated but not required.
You can RSVP through our Eventbrite event.

Details at regionalconservation.org, IRC's Facebook page,
and E-Newsletter. Please share the word!

THANK YOU!

